

# unnathi

prosperity. progress. providence

RESIDENTIAL APARTMENTS & COMMERCIAL SPACES

BEJAI ROAD, PINTO'S LANE, MANGALORE



It's your personal space. Build it the way you envision a home of your own.



# unnathi

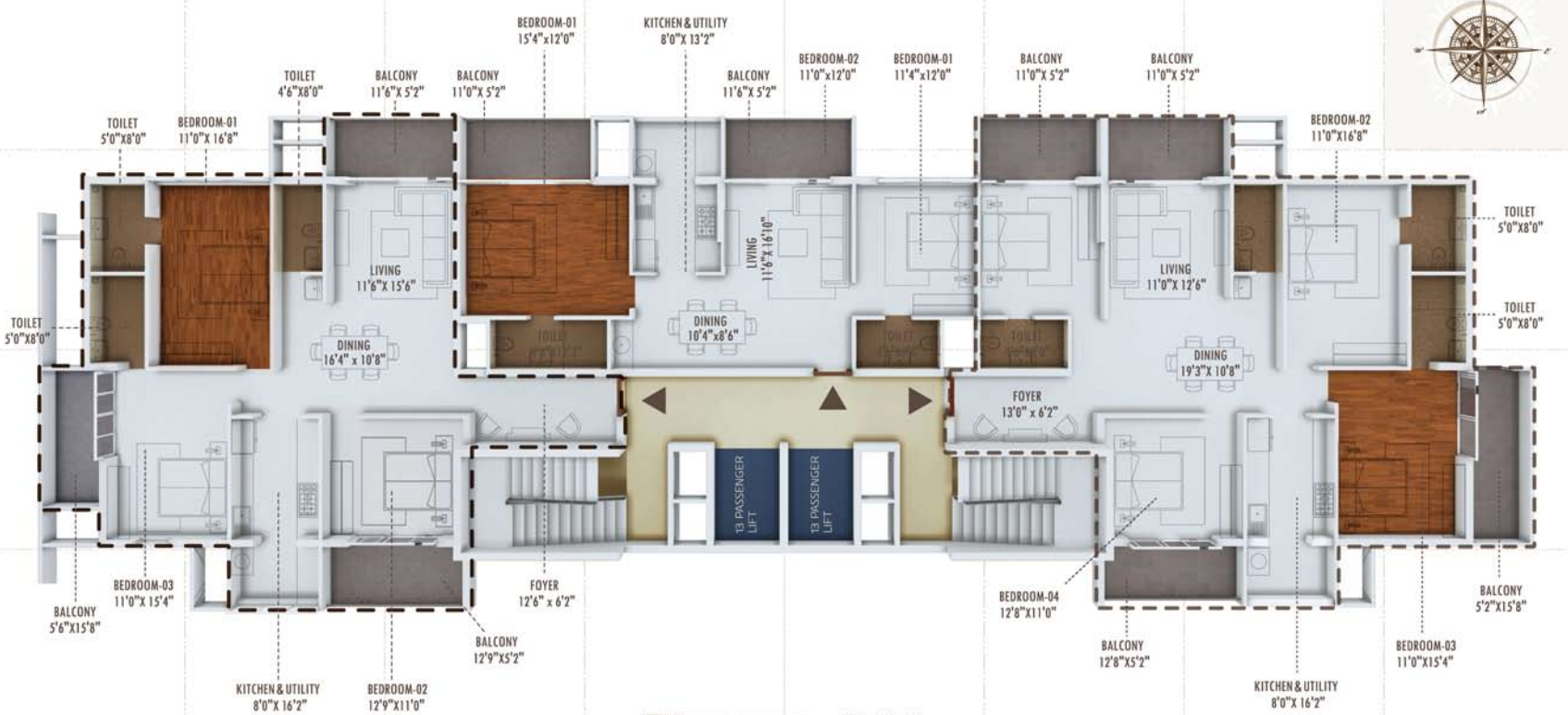
prosperity. progress. providence

At Unnathi, we envisage for you, a home in the way you would like to build your own, given the chance. With only 3 homes on each level and built on contemporary lines it's a perfect blend of modern with traditional.

Every minute aspect at Unnathi is customized and individualistic, starting from the name on your front door to the planning and layout of your interiors. Each home will have its own unique identity, a uniqueness that will be decided mostly by you. After all it's your own personal space – Build it the way you envision the home of your dreams.

Your home at Unnathi is well planned and spacious, but not limited to the base plan that we offer. The interiors are flexible, but the finishes are uncompromised. Hi-end specifications coupled with some of the finest finishes make every home at Unnathi, very special.

The base version of a home at Unnathi includes, full height toughened glass windows for all exterior walls, balconies for all master bedrooms and living rooms, fully finished modular kitchen for every apartment and wooden flooring for all master bedrooms, all at an elite residential location, making Unnathi the perfect place to settle down at.



TYPICAL FLOOR PLAN



vihana



4BHK  
OPTIONAL  
LAYOUT



BUILD  
YOUR  
OWN

laxmi

3BHK  
OPTIONAL  
LAYOUT



## FLOOR FINISHES

- Foyer/living/dining: designer vitrified tiles - 4'0"x2'6"
- Master bedroom: wooden flooring
- Other bedroom: designer vitrified tiles -4'0"x2'6"
- Kitchen: designer vitrified tiles -4'0"x2'6"
- Bathroom: designer anti-skid tiles
- Balcony: rustic tiles

## WALL FINISHES

- Foyer/living/dining: premium acrylic emulsion paint
- Bedrooms: premium acrylic emulsion paint
- Kitchen: glazed tile dado upto ceiling
- Utility: glazed tile dado upto ceiling
- Bathroom: designer wall tiles - 3'0"x1'0"
- Balcony: rustic tiles

## CEILING:

- Premium acrylic emulsion paint

## INTERIOR FINISHES SPECIFICATIONS (BASE VERSION)

### KITCHEN

- 20mm Technistone kitchen platform with modular cabinets
- Reticulated gas piping system
- Single bowl kitchen sink with drain board
- Electrical points for water purifier, chimney, dish washer and refrigerator

### UTILITY

- Provision of cloth line
- Electrical & plumbing points for washing machine

### TOILETS

- Master bedroom : wash basin with Technistone counter & single lever mixer for shower area.
- Other toilets : wash basin with pedestal with single lever mixer for shower area.
- Geysers for all bathrooms
- Exhaust fan for all toilets.
- Wall mounted EWC with health faucets

### ELECTRICAL

- Switches of Schneider /Legrand make
  - Provision for AC in all rooms
  - TV and telephone points in all rooms
  - Power load
- 2 BHK : 4 kw  
3 BHK : 5 kw  
4 BHK : 6 kw

## STRUCTURE

- Reinforced concrete framework
- Laterite stone for exterior walls

## COMMON AREA

- Common area and lobby - Italian marble with inlay work
- Staircase - honed finish granite
- Lift cladding : Italian marble
- Premium acrylic emulsion for walls
- Paver tiles at drop-off-areas
- Toughened glass with S.S. hand rails for balconies

## ELEVATORS:

- 2 automatic 13 passenger designer stainless steel elevator from Schindler (or similar make).

## COMMON AMENITIES

- Intercom connection between homes and security room through telecom service operator chosen by Developer.
- On-site sewage treatment plant
- Rain water harvesting
- Internet broadband through service operator chosen by the Developer
- Motion sensor for common area lighting
- Traffic management for basement parking

## EXTERIOR HIGHLIGHTS & COMMON FACILITIES

### SECURITY SYSTEMS

- Security controlled entry
- Overall perimeter surveillance, round the clock security by trained security personnel
- CCTV for basement, lobby and entry and exit points.
- Video door phone for each home (at extra cost).

### GENERATOR BACK-UP

- 100% back-up for all lighting & amenities including AC's, elevators, kitchen utilities & common areas; except geysers

### LEISURE FACILITIES

- Fully equipped gymnasium - 2000.00 sft
- Enclosed children's play area
- Landscaped areas for recreational activity

## INSTALLATIONS

## DOORS

- MAIN DOOR : PU finished natural wood main door with fully panelled wooden frame
- INTERNAL ROOM DOORS - Melamine finished veneer flush door with panelled wooden frame
- TOILET DOORS : Laminated finished flush door with granite frame.

## WINDOW:

- Heavy duty anodised aluminium section with Antilo Plus sparkling ice glass with mosquito mesh

## SANITARY:

- Sanitary ware of Queo/Duravit make
- CP fittings of Queo/Grohe make



bhagya



UNNATHI  
IS  
UNIQUE &  
UNCOM-  
PARABLE

our projects



PROMOTERS

**KARUNA**  
INFRA PROPERTIES INDIA (P) LTD

**KARUNA INFRA-PROPERTIES (P) LTD**  
7<sup>th</sup> FLOOR, FORTUNE BUILDING, FALNIR ROAD, MANGALORE - 575 001  
T : +91 824 2442864 | M : +91 99015 32910, 99015 32940, 96111 46000  
[www.karunainfroproperties.com](http://www.karunainfroproperties.com)



STRUCTURAL CONSULTANTS



# 202, Sterling Chambers, Kattuking Rd., Kullialkal, Mangalore - 575 002  
Tel: +91 824 2423862 | Email: [vimalanil@vimal.com](mailto:vimalanil@vimal.com)

ARCHITECTS



202, Harbour Apartments, 207, Road, M.S. Road Cross, Kullialkal, Mangalore  
T: +91 88 11 12 52 14 | F: +91 824 427 84 08 | [gulshansr@gmail.com](mailto:gulshansr@gmail.com)

CONTRACTORS

